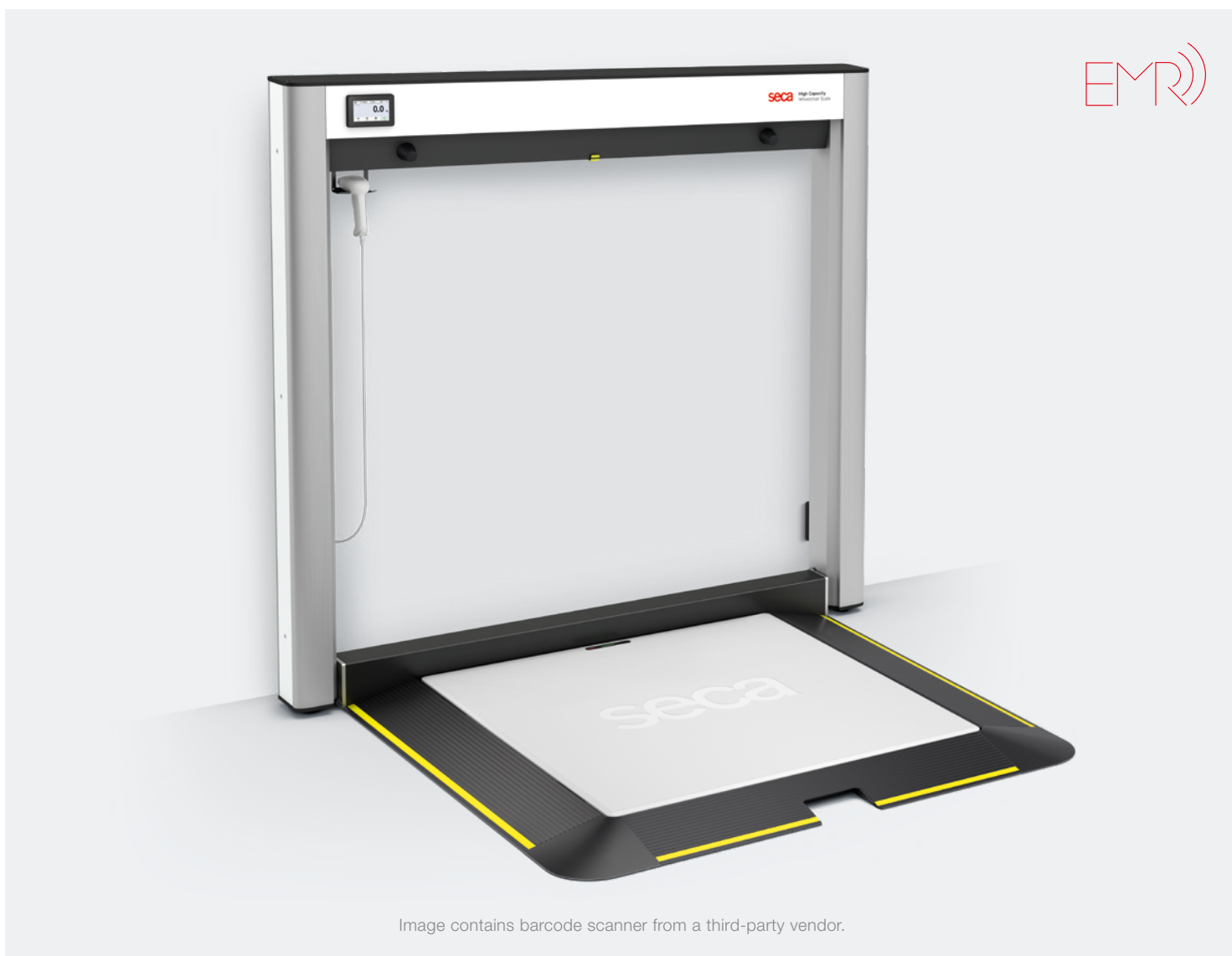


Wall-mounted fold-up wheelchair scale

seca
Precision for health

seca XLine Fold

- + Folds up flat to save critical floor space in tight, high-traffic care areas
- + Gas-spring powered deployment eliminates heavy lifting, pinching, or strain—keeping nurses safe from the start
- + Oversized platform with low-incline ramps: 43.3" x 43.3" surface easily accommodates bariatric wheelchairs and transport chairs
- + Built to handle bariatric demands: supports up to 1,100 lbs with rock-solid stability for safe weighing
- + Tare-by-Scanning function instantly subtracts the stored weight of wheelchairs—streamlining workflow and reducing manual steps
- + Recall function, re-weigh function, and multi-side access simplify weighing in fast-paced environments
- + Enhanced ID-Display™ with improved user guidance, smart tare handling and optional EMR functions such as user and patient identification
- + Direct EMR-Validated Integration: Enhances dosing accuracy and reduces documentation errors with real-time weight transmission



Wall-mounted fold-up wheelchair scale



Unfold Maximum Capability—Without Sacrificing Space

Delivering a full-size, bariatric-ready platform right at the point of care, the seca XLine Fold enables efficient, on-the-spot weighing for patients in wheelchairs, transport chairs, or walkers. Its fold-up design preserves floor space and minimizes the need for patient transfers—saving time, reducing strain, and improving workflow in high-traffic areas.



Effortless Operation with Built-In Efficiency

Secure wall-mounting and gas-spring powered deployment eliminates heavy lifting, pinching, and strain—keeping nurses safe from the start. The ultra-low profile and third ramp enable smooth, multi-directional access for all patient types. Smart features include a Recall function to retrieve the last recorded weight and Pre-TARE memory to store up to three preset deductions—ideal for commonly used mobility aids.

Model number	620
Capacity	1,100 lbs / 500 kg
Graduation	0.2 lb / 100 g
Dimensions (WxHxD)	70.6 x 66 x 58.9 in / 1,794 x 1,677 x 1,497 mm
Dimensions when folded (WxHxD)	70.6 x 66 x 6.2 in / 1,794 x 1,677 x 157 mm
Platform (WxHxD)	43.3 x 2.2 x 43.3 in / 1,100 x 57 x 1,100 mm
Net weight	331 lbs / 115 kg
Power supply	Power adapter
Functions	Display of user and patient name or ID, Display date of birth patient, TARE, Pre-TARE, HOLD, Auto-HOLD, CLEAR, Auto-CLEAR, RESET, lbs/kg switch-over, lbs/kg switch-over lock, cm/inch switch-over, Adjustable damping, BMI, BSA (Body surface area), Standby mode, Recall
Interfaces	Ethernet, Wi-Fi, RS-232 (optional)



Seamless Integration for Ultimate Safety

Validated for integration with leading EMR systems like Cerner, Epic, MEDITECH, and HL7, the seca XLine Fold eliminates manual weight entry—reducing documentation errors and safeguarding weight-based medication dosing. The intelligent ID-Display™ supports nurse-to-patient identification by showing key information such as the patient's name, user ID, and date of birth directly on the scale.

We reserve the right to make modifications.